

Advancing Regional Sustainability During a Time of Dramatic Uncertainty

Today's Work Shop Agenda:

- *My Turn*: How One Land Trusts Sees Its Role Helping to Create a Sustainable Region
Break
- *Your Turn*: Group identify specific topics for discussion.
General subject: Assume we pursue community urban work:
 - What are the big, hairy challenges we need to confront?
 - What are the big hairy mission gains and benefits?
- *Our Turn*: Reports back

Forterra's DNA

our focus	Land (More accurately: <i>Foundational Real estate</i>)
our expertise	Transactions, engagement, JV's and Policy
our horizon	100 years
our style	Bold, Savvy
our approach	Big tent



Should a land trust work in the built environment? What's our impact?

End Product: Sustainability



Tesla Model S: 0 to 60 m.p.h. in 5.4 seconds

The First Wave

Plan

- Motivated by our sense of wonder
- Buy to conserve
- Conserve through new techniques, risk capital



Act

- Formed CLC
- Conserved 45,000 acres

Learn

- Act urgently
- Preserve both wild & working lands
- Conserve for the future

Our Original Path

the first wave



Land
Conservation

The Second Wave

Plan

- The Cascade and Olympic Agendas
- 4,500 participants
- 100-year visions, 25-year game plans
- Vibrant communities key
- End product:
Sustainability



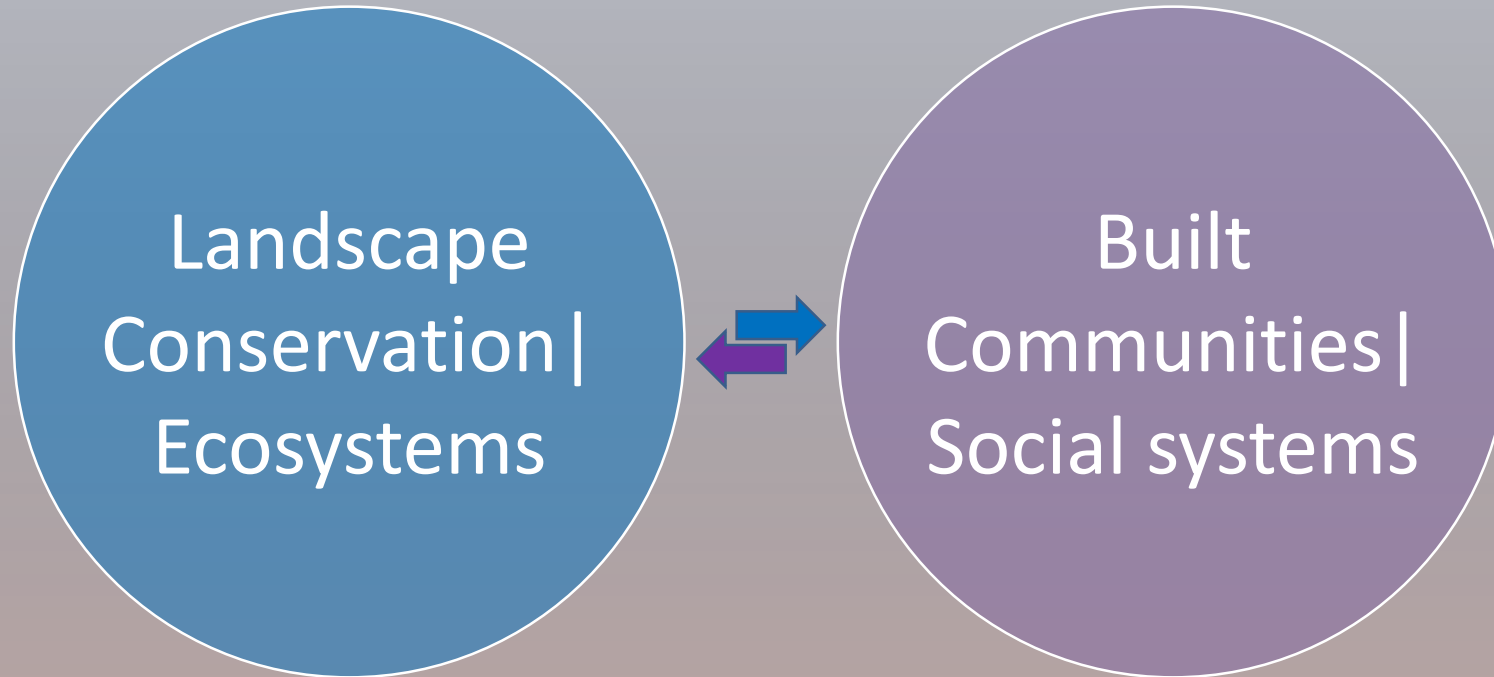
Act

- Changed the game on community development, conservation and stewardship
- Conserved 200,000 acres
- Improved 80 communities
- Restored habitat

Learn

- Path to sustainability
- Our coherent vision
- Challenges are accelerating

New Path



Sustainability is Priceless

OUR LANDSCAPES

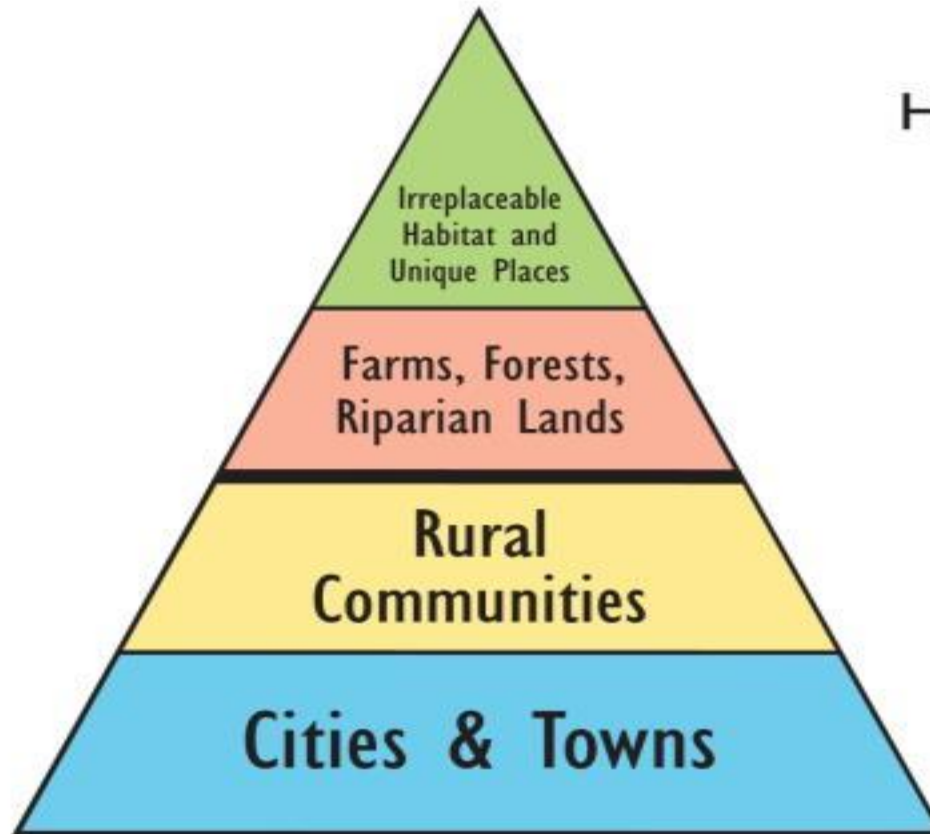
OUR FOOTPRINT

Temporary visitors

Minimal permanence,
visitors welcome

Limited residential with
minimal offsite impacts

Everyone invited and
welcomed



HOW WE GET THERE

Fee acquisition using public and
private funds

Flexible "portfolio" management
coupled with market-based
strategies

maximize conservation and
minimize offsite impacts with
market-based incentives

Livable and affordable;
Mitigate impacts;
Expand economy and
infrastructure

The Third Wave



Rapidly Accelerating Challenges

- **Growing economic inequities**
- **Changing climate**
- **Growing regional population**
- **Changing economy**
- **Dramatic uncertainty**

Why are we doing this?



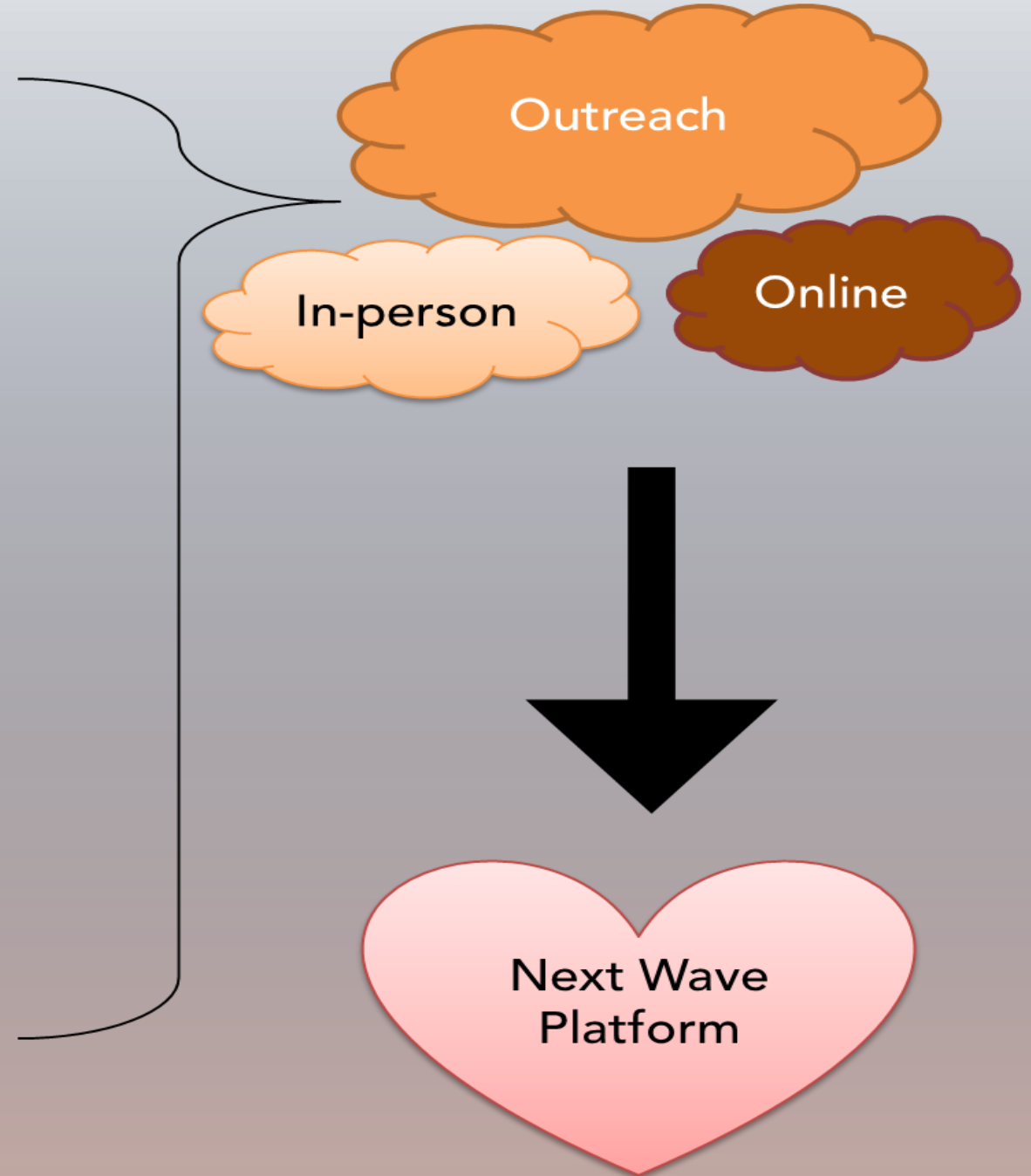
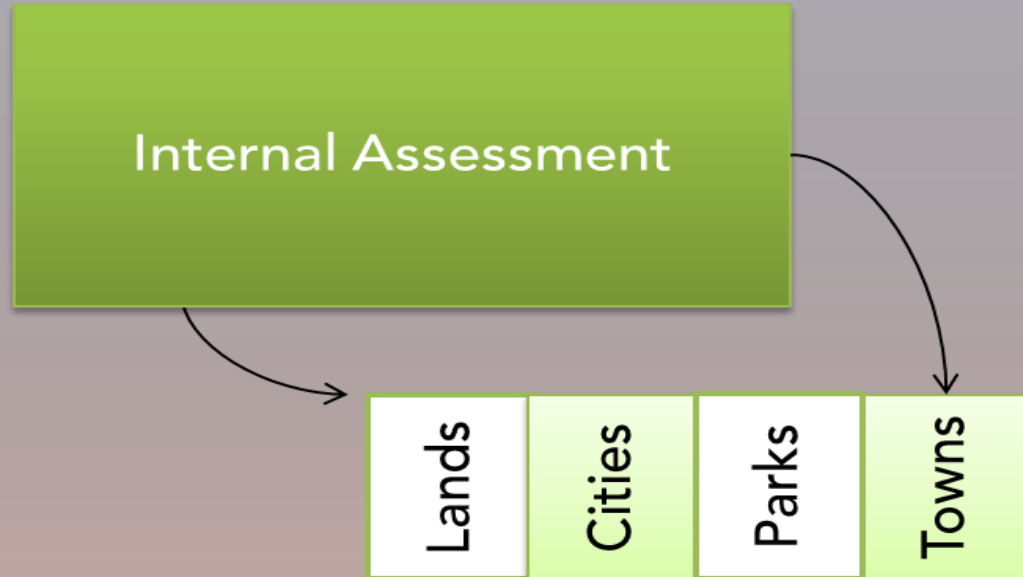
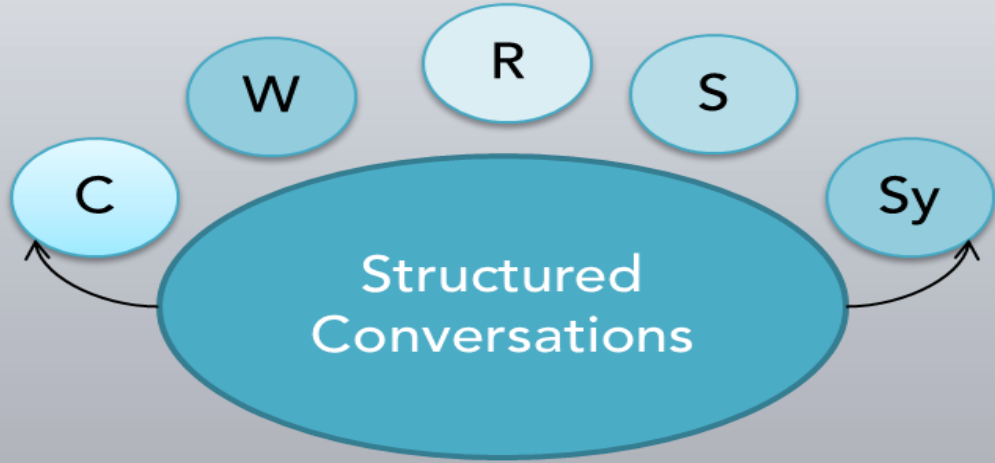
FORT&RRA



- The world has changed
- Brand
- Deepen and refresh relationships with our partners
- Good business practice

FORT&RRA

Next Wave



Calendar

Completed to date

- 25 Structured Conversations
- Research (Climate, Economic Factors, Population)
- External Partner Assessment
- Internal Staff Assessment
- Preliminary assessment of progress towards CA & OA Goals
- Selected a website site developer
- Ongoing advisory group

What We Heard

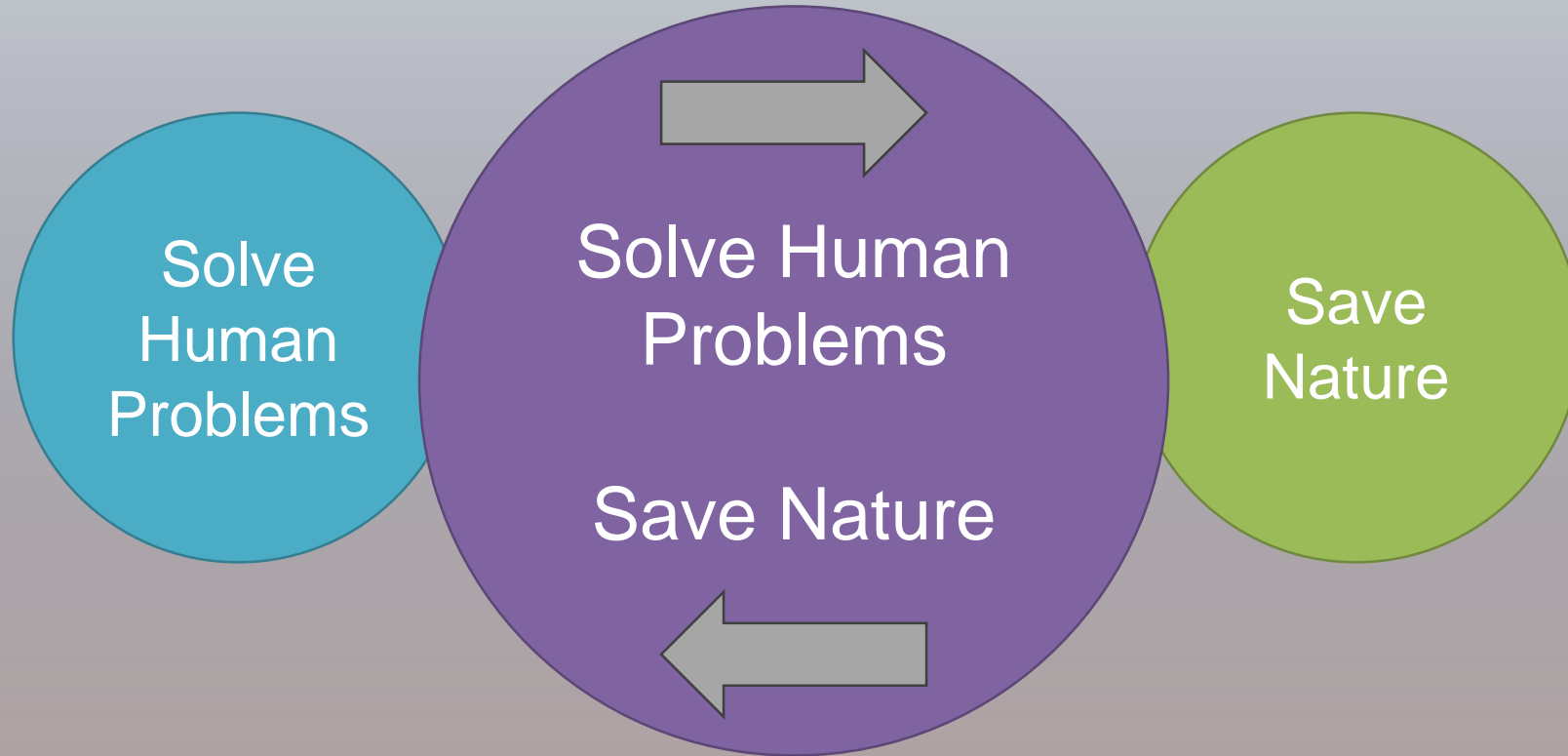
Social and economic issues are environmental issues, we are in the Anthropocene:

- Climate change
- Social and economic well-being (diversity, equity, affordability - starting with homes)
- Rural towns are challenged – strong towns help preserve wild and working lands
- Everyone is after the same – A welcoming community with the basics (Education, Transportation, A Home, Parks, Safe neighborhoods, etc.)
- Building a movement with active engagement
- Forterra is a leader

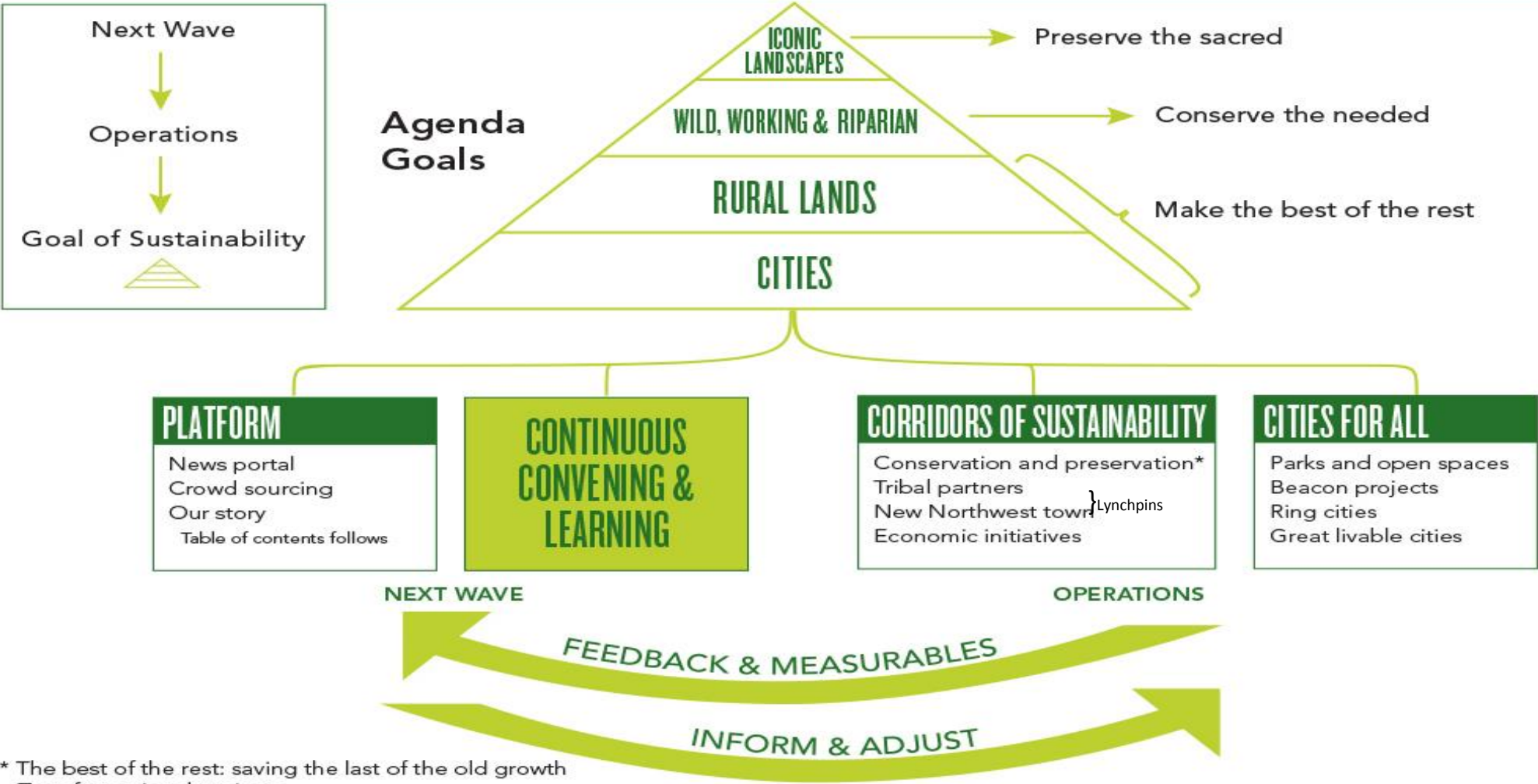
A Better Path to Sustainability

the third wave





NEXT WAVE MODEL Achieving Sustainability in a Dramatically Uncertain World

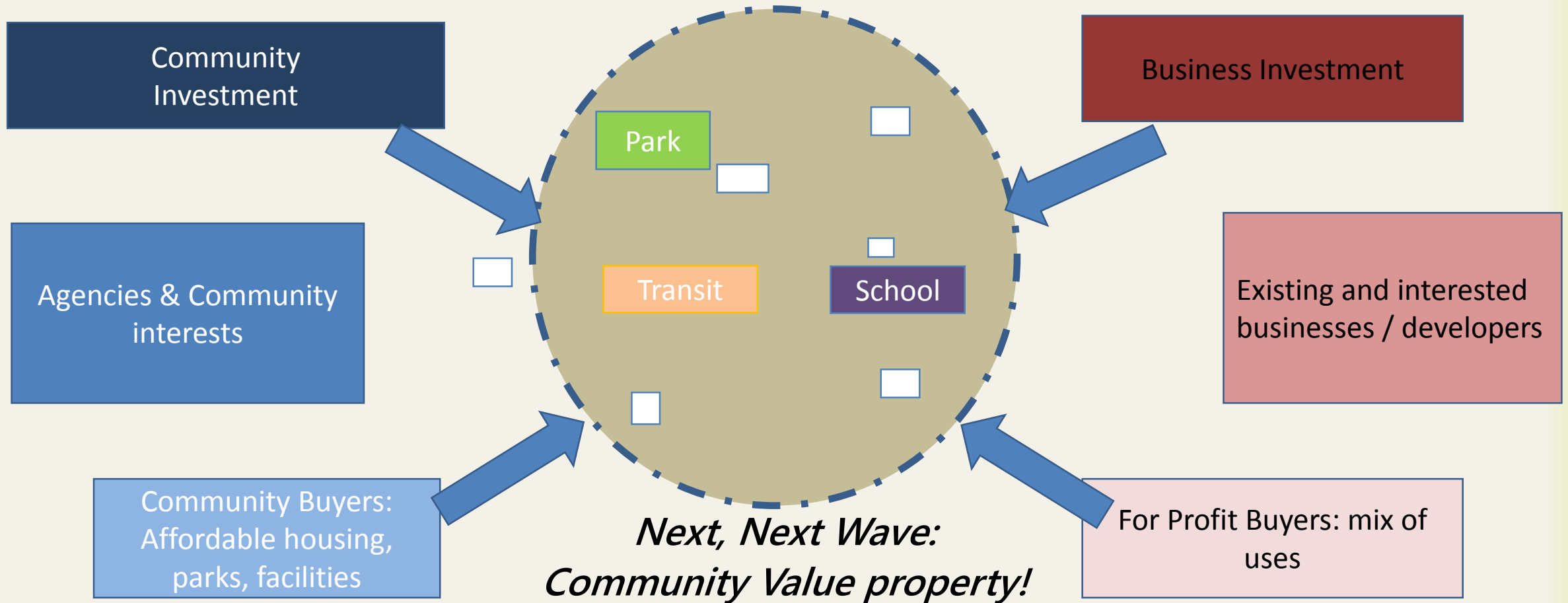


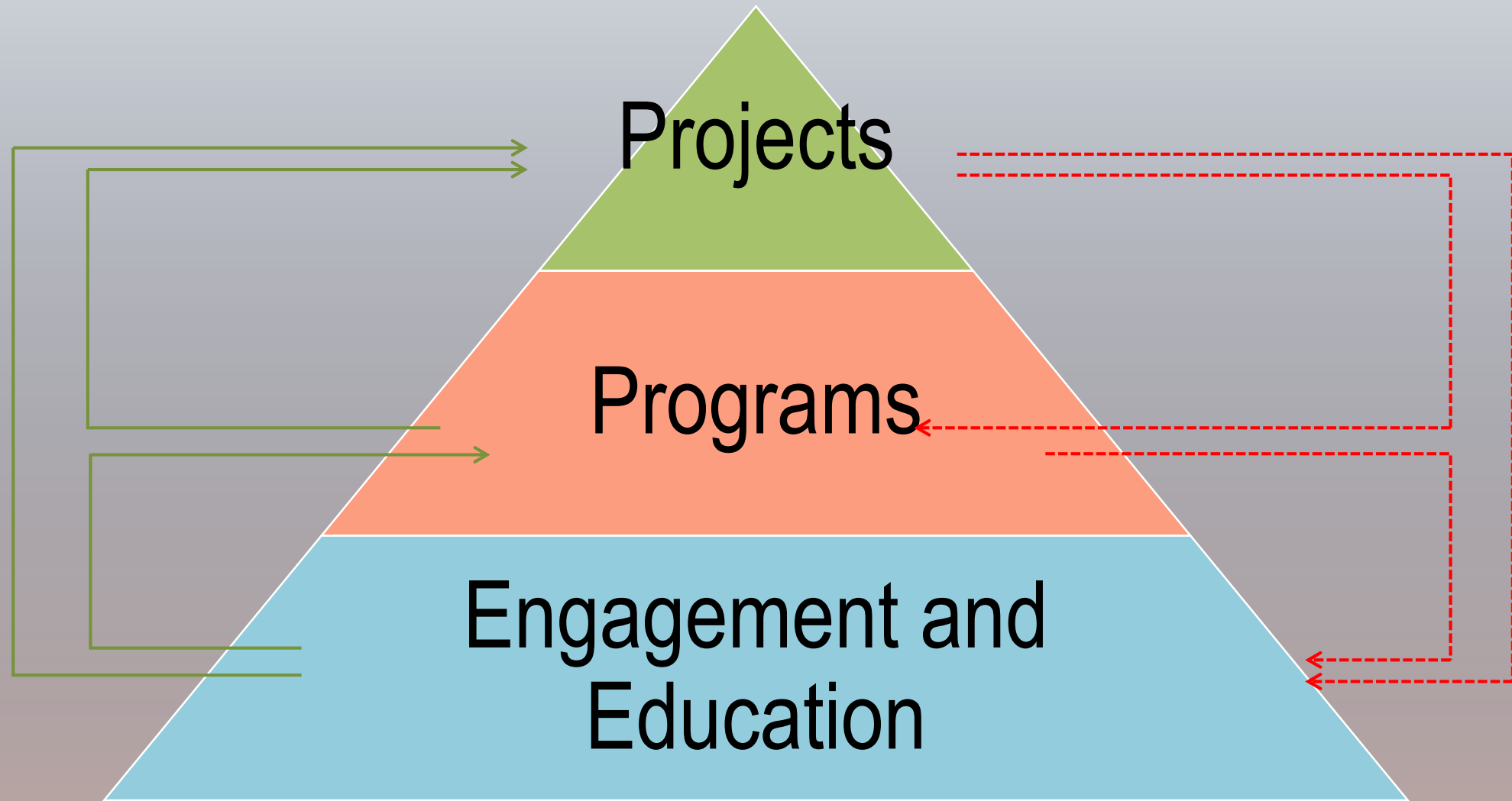
* The best of the rest: saving the last of the old growth
Transformational projects
Key national, wild and working lands

Building Cities for All



Communities as "Ecosystems"





Engagement



Programs



Projects



Projects



Measuring the Impact on People & Place





Duwamish Hill Preserve

Restore Duwamish Challenge
& Duwamish Alive

Community Connectors

Re-use Strategy for Knights Inn
Motel?

Namaste Community Garden

Urban renewal area

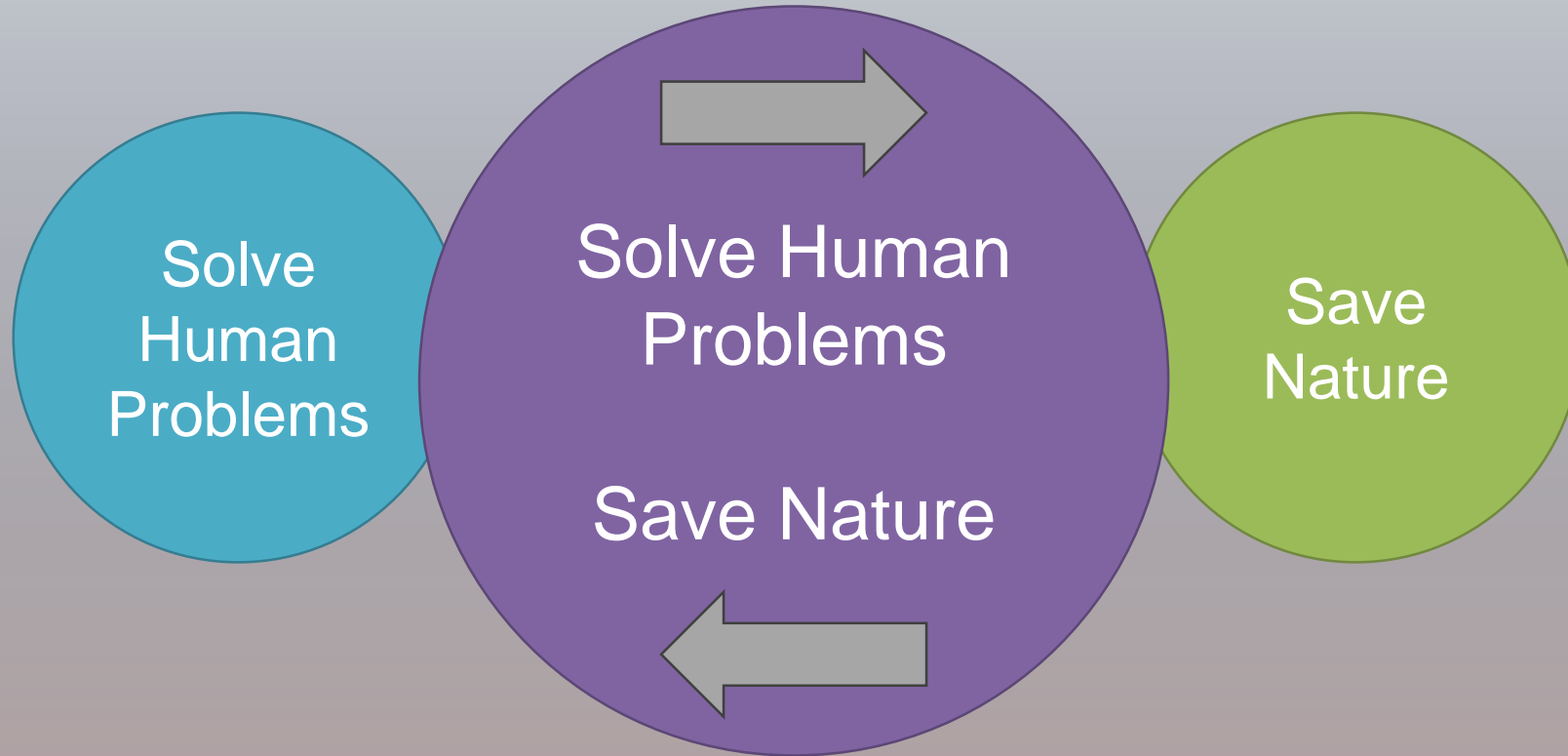
Rainbow Trailer Haven


Site for Raincloud Farms?

Light rail station

Sustainability in the Anthropocene





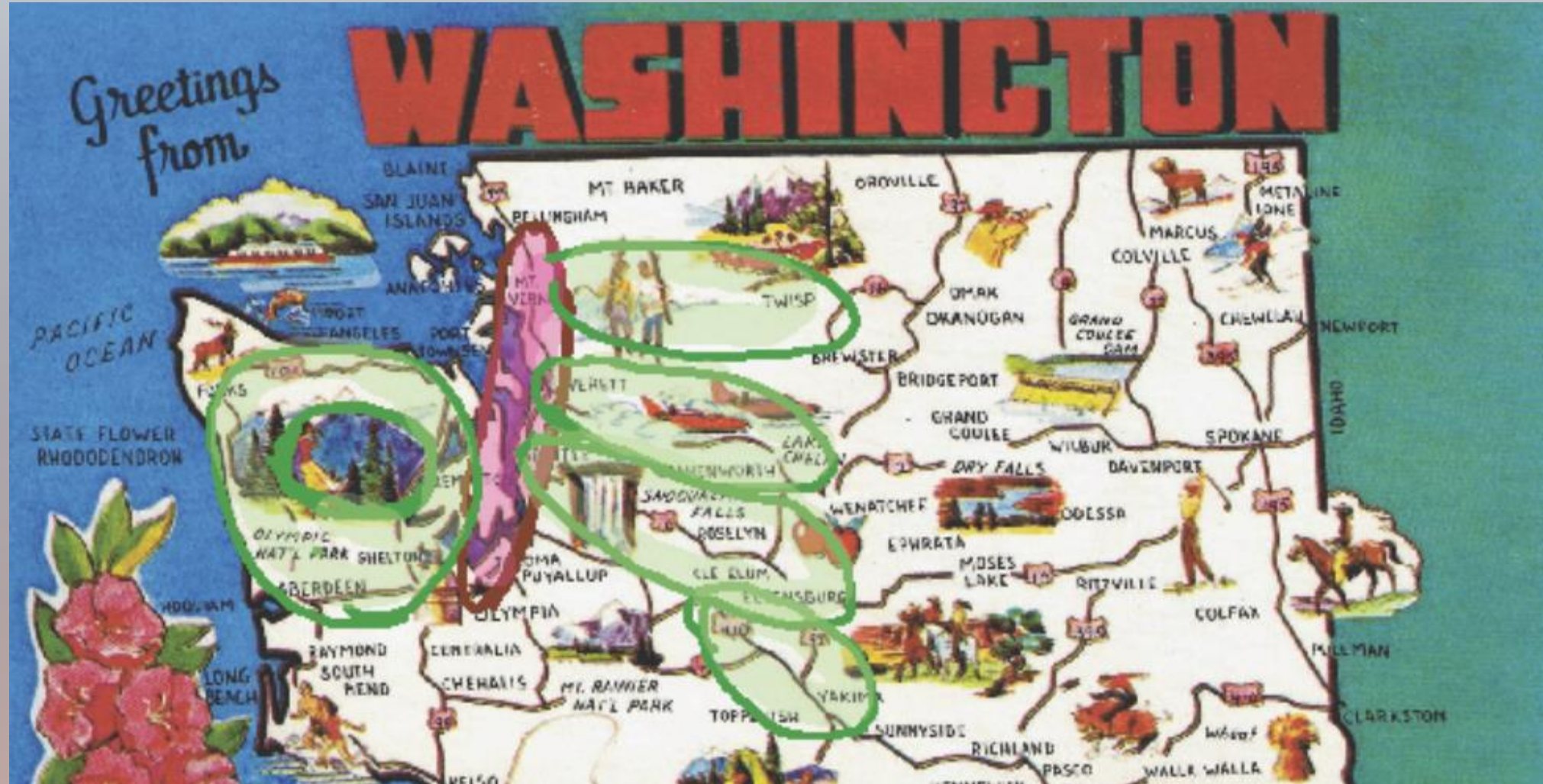


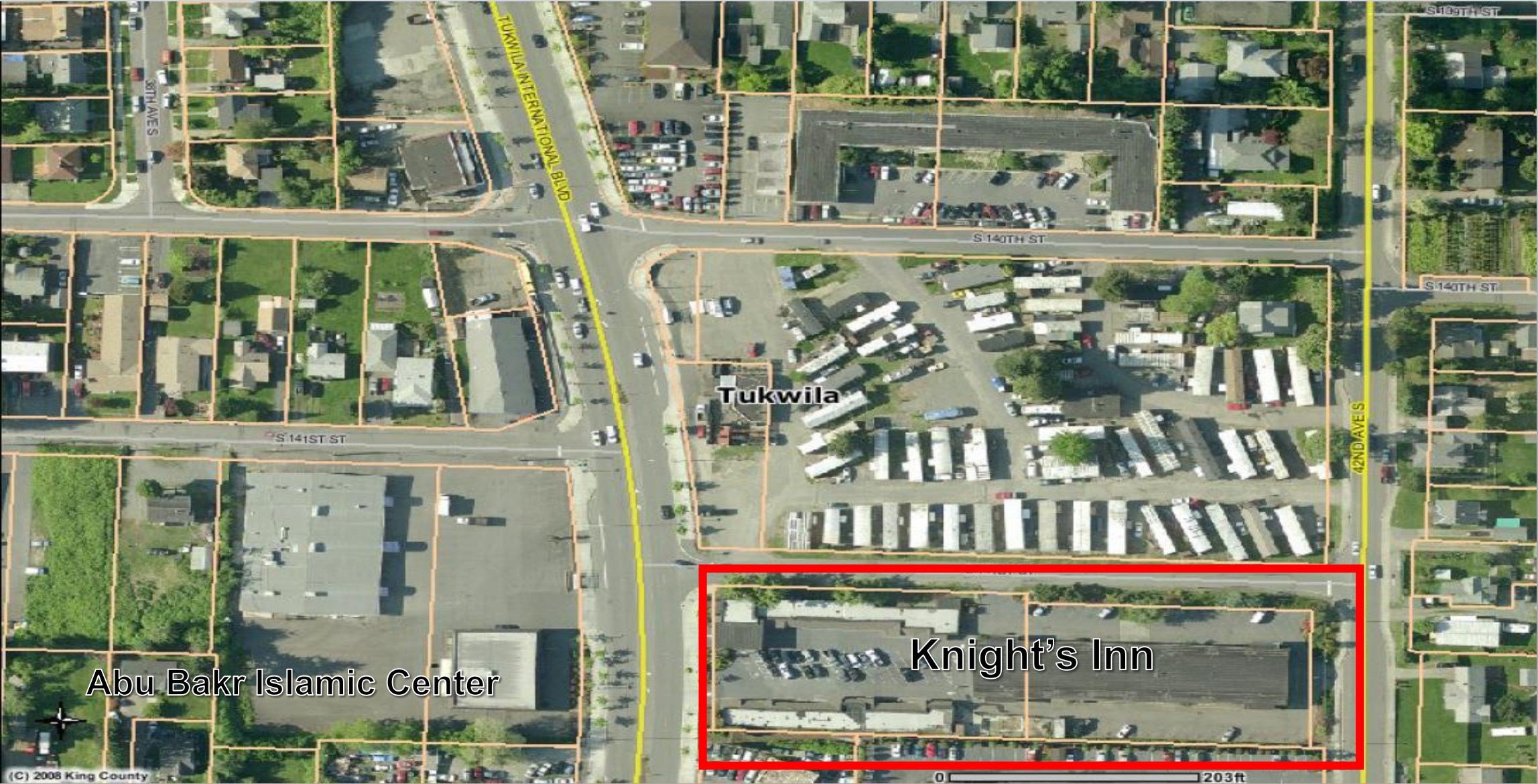
THE HEART OF THE MATTER

A sense of wonder at nature around us

A sense of belonging to this place & each other

CORRIDORS





Identifying Strategic Opportunities: Site for Raincloud Farms Greenhouse and Processing Operation?

