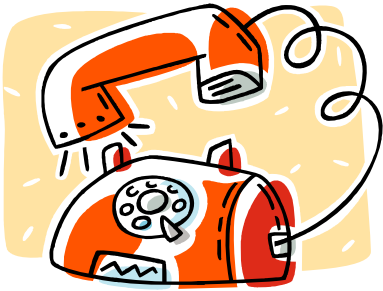


GOT TRAINING?

The 2009 CCLT Training & Education Program



The California Council of Land Trusts is pleased to announce our 2009 Training and Education Program – a cost-effective series of critical courses that will mostly be offered in “virtual classrooms” throughout the year.

“Virtual Classrooms” are where the environment and the economy meet. With continuing fiscal challenges confronting us all, CCLT is proud to provide top-notch training without leaving your office or home. These real-time, remote classes lessen carbon footprints, save valuable time, and will keep your costs low. In response to member requests, we are also offering several evening and Saturday classes to make it easier for board members to get the training they need.

This brochure contains all course descriptions and a registration form that features discounted rates for CCLT members, public agency associates, and supporters.

Many thanks to the Alcoa Foundation and the Resources Legacy Fund Foundation who continue their investment in a lasting legacy for land conservation in California through their generous support of this program.



The 2009 CCLT Training and Educational Program

Class # 1

Accreditation: Introduction

This 1.5-hour course introduces land trusts to the accreditation process and helps them consider their own interest and path to accreditation.

Free to members/\$15 Non-members

Class # 1 July 8 – Virtual Classroom
5:30 pm -7:00 pm



– Never fear –
Our classes will help you tackle accreditation!

Class # 2

Accreditation: In-Depth

This 3.5-hour advanced workshop will address all aspects of accreditation. Sample documents, application, and assessment documents will be provided for the course with an overview of available online resources.

\$25 Members/\$50 Non-members

Class #2A May 21 – Virtual Classroom
9:00 am -12:30 pm

Class #2B July 18 (Sat) – Virtual Classroom
9:30 am - 1:00 pm

Class #2C July 28 – Virtual Classroom
9:00 am - 12:30 pm

Class #3

Planned Giving: Overview

This 2.5-hour class will introduce and define the key elements of a Planned Giving Program, exploring how land trusts can develop a basic, cost-effective program, and demonstrate why this program should be a priority for all land trusts.

\$20 Members/\$40 Non-members

Class #3A May 23 (Sat) – Virtual Classroom
9:30 am -12:00 pm

Class #3B June 9 – Virtual Classroom
9:30 am -12:00 pm

Class #3C July 11 (Sat) – Virtual Classroom
9:30 am -12:00 pm

Class #4

Planned Giving: In-Depth Series

This **Virtual Classroom series** is made up of three, 2.5-hour classes. Classes demonstrate how to create and manage a Planned Giving Program with sample documents provided. Special guest speakers will join CCLT trainer Cheryl Belcher to discuss different key topics at each class.

\$60 Member/\$120 Non-members

Class #4 June 18, July 22 & August 12
9:30 am-12:00 pm



*Train yourself and prepare your land trust to
capture essential planned gifts!*

Class #5

Climate Change in California

Climate change is rapidly influencing your ability to protect and steward lands. Keep your organization abreast of climate change opportunities and challenges! This workshop will update conservationists on evolving policies and funding mechanisms, new agency requirements for acquisition proposals and ongoing reporting, and the State's adaptation plan that will influence its conservation priorities in the coming years.

Free to members/\$15 Non-members

Class #5A September 3 – Virtual Classroom
9:00 am -11:30 am

Class #5B September 9 – Virtual Classroom
9:00 am -11:30 am

Class #5C September 14 – Virtual Classroom
9:00 am -11:30 am

Class #6

Easement & Land Stewardship

This 3-day course will cover all aspects of baseline preparation, monitoring and photo point creation, and includes a field component at the Wind Wolf Preserve in Kern County. It will be taught by Shelton Douthit. Full class details begin on page 3. Space is limited so sign up early.

\$80 Members/\$160 Non-members

Class #6 November 3-6



All you need is a phone and DSL internet service to join a Virtual Classroom.

FAQ about VIRTUAL CLASSROOMS

What is a “Virtual Classroom”? It is a real-time, phone-based seminar that utilizes a toll-free conference line and access to a secure web site to view/download all training materials. Participants hear the trainer, follow-along with the materials, and can ask questions. You can either print out training materials prior to the class (recommended) or view the materials on your computer screen during the class.

What do I need? You must have access to a phone, computer and an email account. DSL is recommended to download the large class files. If you have dial-up internet service, we encourage you to find a colleague with DSL and download the materials.

What do I pay? The class fees include all training documents and one toll-free phone line.

How do I get started? Virtual Classrooms are not “drop-in” sessions. You must register for the class at least three days before it is offered. Once registered, you will be sent the information to enable you to download the class materials from CCLT's web site; materials will be posted three days before the class.

Your email address is the key to sending you the toll-free access number and link to access the class materials.

EASEMENT AND LAND STEWARDSHIP: Baseline Documentation and Monitoring Skills

November 3-6*, 2009

***Begins: 2pm on Tuesday, November 3rd
Concludes: 2pm on Friday, November 6th
Wind Wolves Preserve, Maricopa, California**

**Instructor: Shelton Douthit, assisted by Samantha Berst,
Mizuki Seita, and Brendan Hughes**



Special thanks to:

**Preserving Wild California of the Resources Legacy Fund Foundation
The Wildlands Conservancy for hosting the course at Wind Wolves Preserve**

Summary

This hands-on, three day workshop will provide an overview of conservation easement and fee-land baseline documentation and monitoring techniques with an emphasis on field safety, outdoor orienteering, use of GPS receivers, basic map reading and photo-point monitoring. Students will prepare draft baseline reports using sample conservation easement and other agreements restricting use of real property from land trusts in the region, make landowner and land user contact in the field and practice problem solving techniques in “real-world” field exercises. Emphasis will be placed on easements and agreements restricting use. This workshop is intended for land trust board members, field staff and active volunteers directly involved with land stewardship activities. Complete agenda on page 5.

Wind Wolves Preserve

The Wind Wolves Preserve, located in Kern County at the southern tip of the San Joaquin Valley and 25 miles west of the Grapevine, is a 100,000 acre ecological preserve owned and operated The Wildlands Conservancy. Wind Wolves contains an ecologically unique region where the Transverse Ranges, Coast Ranges, Sierra Nevada, western Mojave Desert and San Joaquin Valley converge. Tule elk, golden eagles, large stands of blue oak and valley oak and the endangered San Joaquin kit fox are found at the Preserve.

Food and Lodging

Camping is available at the Wind Wolves Preserve but limited to twelve sites and available to those who register for the class early. Hotels are also found in the Grapevine area and in the small town of Maricopa, 13 miles west. A communal spaghetti dinner will be served on Tuesday evening and a communal BBQ will be held on Wednesday evening. Coffee and tea will also be available each morning. Participants are responsible for their own breakfast and lunch. Stores are located in the Grapevine and Maricopa areas.

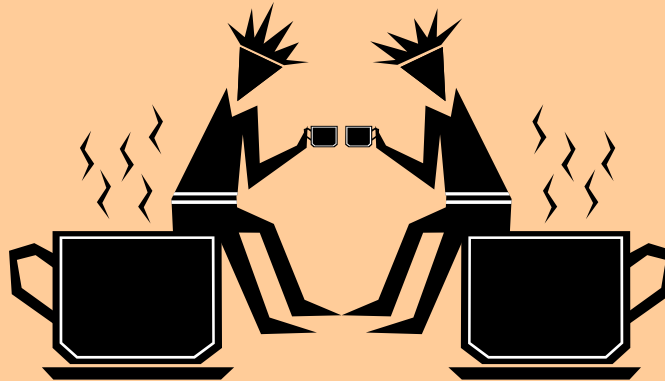
Cost and Equipment Needs

This is a field course and each participant will be required to hike a minimum of 2 miles daily. Please bring a day pack and wear layered clothing. The fee for this class covers the costs of communal food and teaching materials.

Watch For

THURSDAY MORNING COFFEE ... AND CONVERSATION

A CCLT Member Benefit Project



We will start the conversation and you provide the beverage!!
No need to lose time traveling, just call in.

Join CCLT and guest speakers for a special virtual series in 2009 on shepherding your organization through the economic downturn with practical and positive steps you can take. This new series grew out of the great response participants had to the 2009 CCLT Conference presentation, *Surviving and Thriving in Challenging Times*. The universal response to the session was to ask that we continue the dialog in the spirit of connecting expert advice from specialists with executive directors and development directors who are making tough decisions and finding creative solutions to lead their groups through these hard times. Stay informed, connected, and bring home new ideas to your organization!

Each 60-minute call will kick off at 9:00 am with expert words of advice and wisdom, followed by input from our callers with their experience or questions on the topic. We will close out the hour with off-topic questions or information-sharing about what is working for your organization.

Mark your calendars today! CCLT Members (land trusts, public agency associates and supporters) will receive an email invitation with full details and the call-in number.

- ✓ May 28 – **Talking with Donors During a Downturn**
- ✓ June 11 – **Focus on Membership Retention** - Led by Donna Fletcher
- ✓ Aug 27 – **Personnel Issues Facing your Land Trust**
- ✓ Sept 24 – **Managing Your Investments in a Hard Market**
- ✓ Oct 29 – **Member's Request:** What would you like to talk about? Topic will be determined by requests from participants during the May, June and August calls.

COURSE AGENDA FOR STEWARDSHIP COURSE

Introduction

- Welcome; review workshop agenda, goals and logistics
- The goal of monitoring: land trusts, the courts and you
- Photos speak clearer than words: the need to use a photo-point system
- Model stewardship monitoring protocol and quality control
- From easement document to field checklist
- Group exercise: review conservation easement/agreements restricting use documents from a stewardship perspective
- Pre-monitoring activities and monitoring instructions

Basic Field Skills

- Getting oriented in the field:
 - Basics of map interpretation
 - Global Positioning System (GPS) basics
- Personal safety: clothing and equipment
- Common hazards
- The Field Pack: essential ingredients

Walking the Line: The Fundamentals of Field Inspections

- What to look for in the field (The Checklist)
- Establishing photo-points
- Documenting what you see
- Re-locating existing photo-points and ground-truthing
- Landowner and land user contact in the field
- Dealing with surprises: responding to problems

Report Preparation, Recordkeeping and Monitoring Program Design

- Baseline and monitoring report preparation
- Critique of baseline documents
- Long-term recordkeeping requirements
- Developing a monitoring program for agreements restricting use

Summary and Recap

Please do not hesitate to contact us with any questions you may have.

CCLT's Program Manager, Cheryl Belcher, can be reached at cherylbclcher@gmail.com



CALIFORNIA COUNCIL OF LAND TRUSTS

1029 K Street, Suite 48
Sacramento, CA 95814

916.497.0272 tel
916.443.2558 fax
www.calandtrusts.org



916.497.0272

www.calandtrusts.org

REGISTRATION FORM

2009 CCLT Education and Training Program

For Land Trusts, Supporters and Public Agency Associates

Your Information

Name: _____ Title: _____
 Organization: _____ Are you a CCLT Member? _____
 Mailing Address: _____
 City: _____ State: _____ Zip: _____
 Telephone: _____ E-mail: _____

Register Now!

CCLT Members pay a discounted registration fee as a member benefit. Non-members pay the full class fee.

The attached Training and Education Calendar outlines the dates, times, locations and costs of CCLT's 2009 training opportunities.

"Virtual Classroom" fees include one toll free access line with each registration.

DSL is recommended in order to download the class materials from CCLT's website prior to the class. Access codes will be sent after registration.

You must be registered to participate in the classes – access to class entry and download codes is triggered through your email and phone number.

Workshop and Training Fees

<i>Please Circle your class preference(s):</i>	Non-Member	Member
#1 Accreditation: Introduction	\$ 15	no charge
#2 Accreditation: In-Depth <i>Class #2A or Class #2B or Class #2C</i>	\$ 50	\$ 25
#3 Planned Giving: Overview <i>Class #3A or Class #3B or Class #3C</i>	\$ 40	\$20
#4 Planned Giving: In-Depth Series <i>June 18, July 22 and August 12</i>	\$ 120	\$ 60
#5 Climate Change in California <i>Class #5A or Class #5B or Class #5C</i>	\$ 15	no charge
#6 Monitoring (3-day class)	\$ 160	\$ 80
Total	\$ _____	\$ _____

Payment Information

To register, print this form and return with your payment by check or credit card number to CCLT, 1029 K Street, Suite 48, Sacramento, CA 95814 or fax form with credit card information to 916-443-2558.

Please charge my fees of \$ _____ to: Visa Mastercard My check is enclosed for \$ _____

Card # _____ Exp. Date _____

Name _____ Signature _____

Billing Address _____

Questions? Email cherylmbelcher@gmail.com or call the CCLT office at 916-497-0272